

Q&T Quality Electronics, Inc.

Corporate Headquarters

7211 Patterson Drive
Garden Grove, California 92841
(714) 698-0880
Fax (714) 698-0888

ISO9001/AS9100

ITAR Registered: M31893

RoHS Compliant

Circuit Board Assembly

Electromechanical Assembly

Wire and Cable Assembly

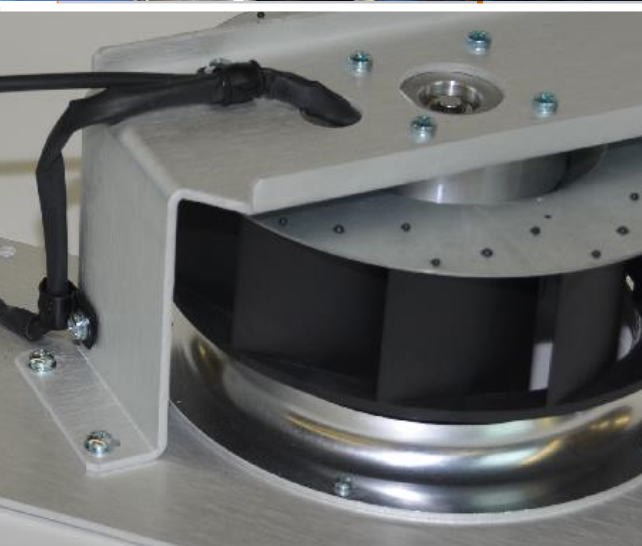
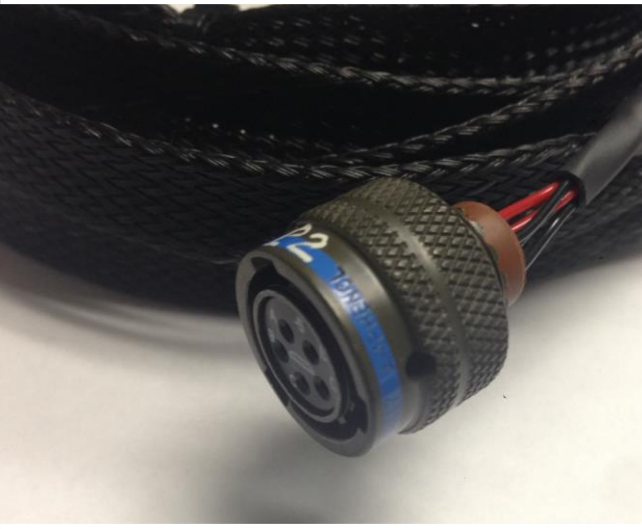
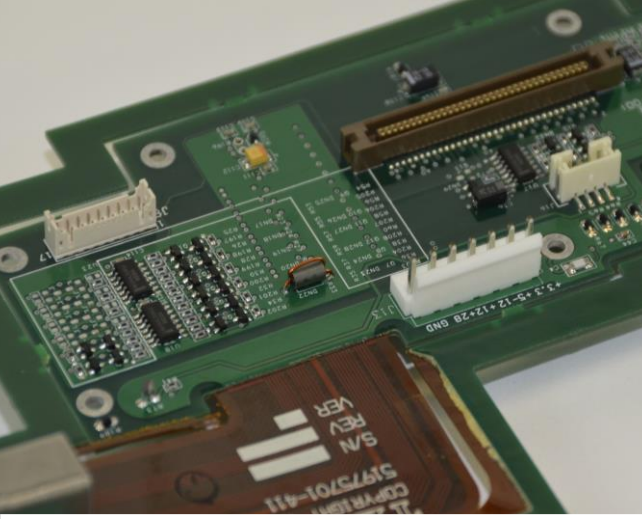
Fabrication

High Precision Machining

Finishing

Prototyping/NPI

Supply Chain/Materials management

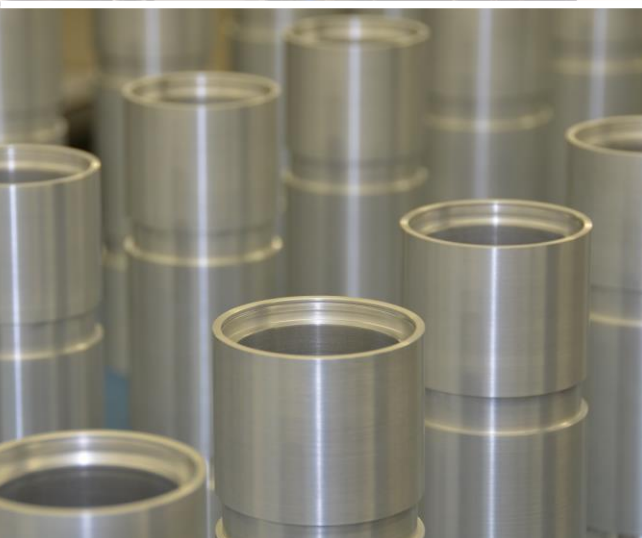
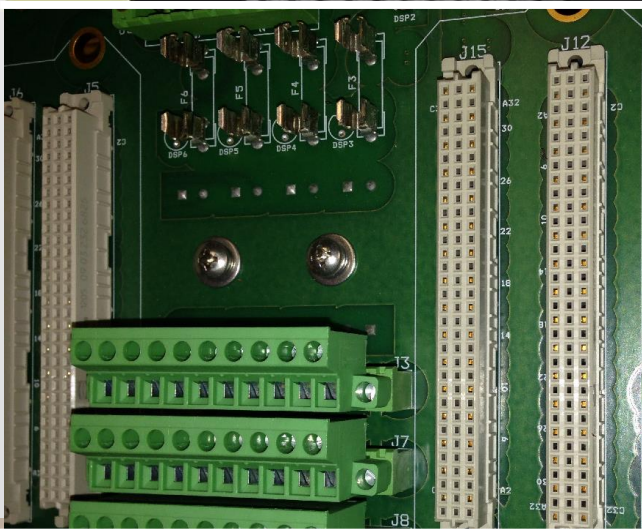


T&T

is located in the heart of Southern California, in a company owned 27,000 square foot facility, housing capital equipment for metal fabrication, high precision machining, surface mount & through hole PCB assembly, cable assembly, clean room, and raw material & finished goods inventory. We can also accommodate installation of subassemblies, hardware, connectors/switches, routing of cabling, wire harnesses, and fiber optics. System build (box build) programs are product centric, utilizing lean manufacturing principles to establish a cost effective assembly process while ensuring the unique manufacturing requirements for your product will not be compromised.

System build programs can be established around your specific needs and include all or specific aspects of:

- **Prototyping/NPI** – Prototyping and NPI support, allowing for seamless integration to an overall manufacturing solution. For customers requiring quick-turn prototype assembly, we can accommodate a 24-hour turnaround upon acquisition of all material.
- **Program design** – Product assembly concept, lean process analysis, traceability, product testing and incoming/outgoing inspection, tooling acquisition.
- **Material management/Supply chain solution** – Component acquisition, preassembled parts build up, cost analysis and reduction strategies, lead-time assessment & management, inventory bonding, kitting, vendor managed inventory programs, Kan Ban, Min/Max, JIT finished goods inventory solutions, local and global solutions.
- **Circuit board assembly** – Rigid, flexible, and flex-rigid circuit boards. Single sided, double side, surface mount, through hole, mixed technology containing surface mount and through hole components on the same board.



- **Electromechanical assembly** – Bench top, floor static and rotating assembly, sub-assembly integration, interlocks & fasteners, wire routing, mechatronics systems.
- **Fabrication** – Loose parts, enclosures, forming, rolling, cutting, binding, fastening, crimped seam, welding, loose parts final assembly.
- **High precision machining** – CNC lathe, milling, and cutting. Loose parts, shaping, turning, drilling, planning, boring, broaching, loose parts final assembly.
- **Wire and cable assembly** – Harnessing, bundling, routing, hand-soldering, termination, over-molding, integration into sub-assemblies.
- **Testing/Inspection** – Functional, in-circuit, solder joint, optical, continuity, specialized testing requirements.
- **Finishing** – Plating, powder coating, painting, silk screening, custom colors, decals.
- **Labeling and serializing** – Component level, board level, wire/cable, chassis, enclosure.
- **Programming** – Electronic component programming

Quality

T&T is an ISO9001 and AS9100 certified contract manufacturer as well ITAR registered. We also adhere to military standards for a variety of sub-assembly categories as well as maintain strict IPC and RoHS compliance. We closely monitor our manufacturing environment for variables such as temperature and humidity to minimize the impact of environmental factors, and also have a formal FOD prevention program. We also implement comprehensive ESD standards to protect materials and finished goods inventory from electrostatic discharge. Our certifications and standards compliances are as follows:

- ISO9001
- AS9100
- ITAR Registered: M31893
- J-STD-001
- IPC-A-610 II, III
- M227501, M27500, MIL-DTL-38999 (Cable Assembly)
- AWS B2.1 (Welding)
- MIL-C-5541(Plating)
- MIL-STD-595B (Painting)